



Scotchbrand.com/Mounting

# Removable Mounting Squares

- Mount kids' artwork and other lightweight items on most wall surfaces\* that are clean, dry and smooth.

### Instructions:

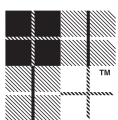
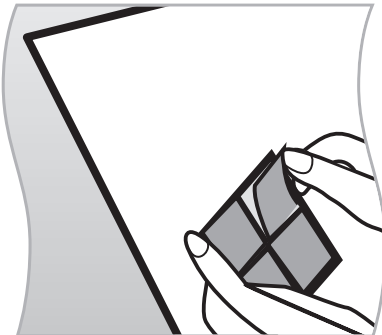
Use four squares for each 226 g/0.5 lb of weight to be mounted (maximum 453 g/1 lb).

\*Not recommended for use on wallpaper, delicate surfaces or walls painted with flat paint. May damage some substrates upon removal.

For questions, ideas and special offers go to [Scotchbrand.com/Mounting](http://Scotchbrand.com/Mounting)



Use instead of push pins



**Scotch® Brand Tapes**  
Great ideas that stick